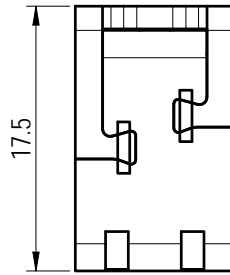
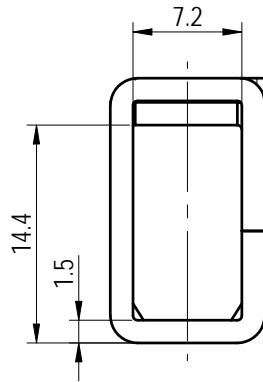
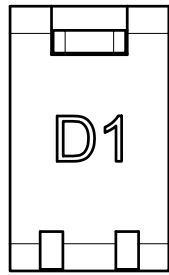
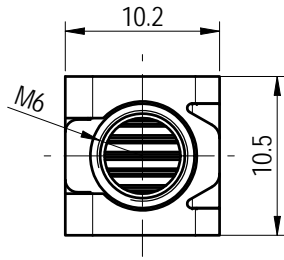
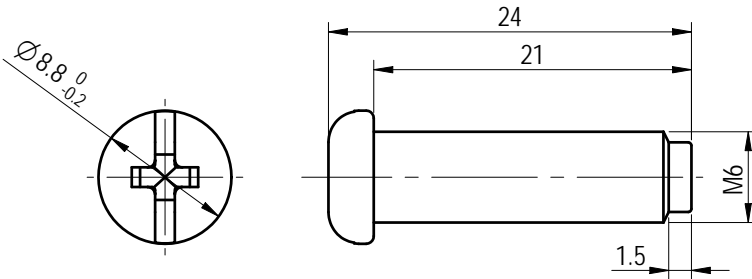


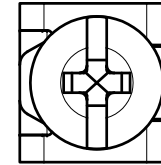
Cage



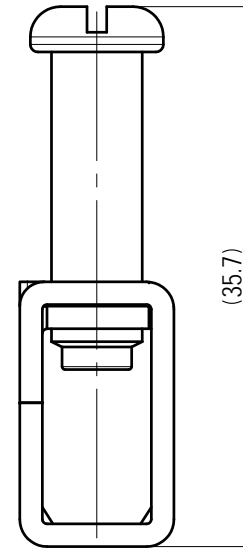
Screw



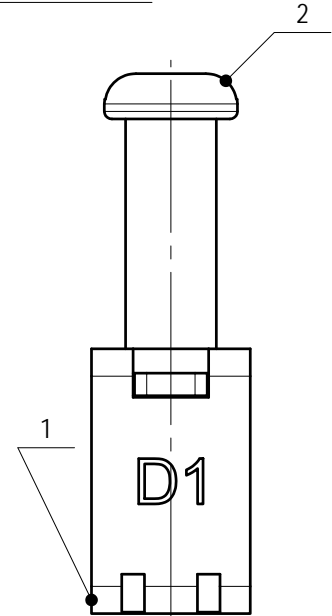
未注公差/General tolerances (mm)													0.1/10
0	>3	>6	>10	>18	>30	>50	>80	>120	>180	>250	>315	>400	
~3	~6	~10	~18	~30	~50	~80	~120	~180	~250	~315	~400	~500	>500
±0.12	±0.18	±0.22	±0.26	±0.31	±0.37	±0.57	±0.80	±0.93	±1.05	±1.15	±1.60	±2.20	±2.50



Screw preassembly status only for reference



03



ITEM	NAME OF PART	MATERIAL	NOTES
2	Screw	Steel	M6/Zn Plated
1	Cage	Steel	M6/Zn Plated
螺丝扭矩/Torque Tightening(N·m/Lb.in)		M6, 4.0/35.5	
符合 RoHS 环保要求/Conform to RoHS		Yes	

DEGSON		MATERIAL:	SURFACE/COLOR:		
APPD: 蓝贵凡 2023.11.09		MAT NO./REV: 10900000245 / 00	MAT STATUS: 批量		
CHKD: 曹利彬 2023.11.09		NAME			
DRFT: 孙科豪 2023.11.09		K89-00A (H)			
DRAWING NO.	TYPE	DRAWING STATUS	SCALE	SHEET	
200014795	CUSTOMER DRAWING	已发布	2:1	1/1	

REV	ECN	DESCRIPTION	DRFT	DATE
03				

Transfer or duplication of this document as well as the utilization or communication of its content are prohibited unless express approval is granted. Violations will be held for compensation. All rights reserved for patent, utility model or designer registrations. 除专利等明确授权, 否则禁止译出、复制、引用、发布等文件的操作。未经明确许可, 擅自复制或传播文件内容, 公司将保留追究法律责任的权利。